

RPS7 Antibody (monoclonal) (M03)**Mouse monoclonal antibody raised against a partial recombinant RPS7.****Catalog # AT3725a****Specification**

RPS7 Antibody (monoclonal) (M03) - Product Information

Application	WB, IHC, IF, E
Primary Accession	P62081
Other Accession	NM_001011
Reactivity	Human, Mouse, Rat
Host	mouse
Clonality	Monoclonal
Isotype	IgG1 Kappa
Calculated MW	22127

RPS7 Antibody (monoclonal) (M03) - Additional Information**Gene ID** 6201**Other Names**

40S ribosomal protein S7, RPS7

Target/Specificity

RPS7 (NP_001002, 95 a.a. ~ 194 a.a) partial recombinant protein with GST tag. MW of the GST tag alone is 26 KDa.

Dilution

WB~~1:500~1000

IHC~~1:100~500

IF~~1:50~200

E~~N/A

Format

Clear, colorless solution in phosphate buffered saline, pH 7.2 .

Storage

Store at -20°C or lower. Aliquot to avoid repeated freezing and thawing.

Precautions

RPS7 Antibody (monoclonal) (M03) is for research use only and not for use in diagnostic or therapeutic procedures.

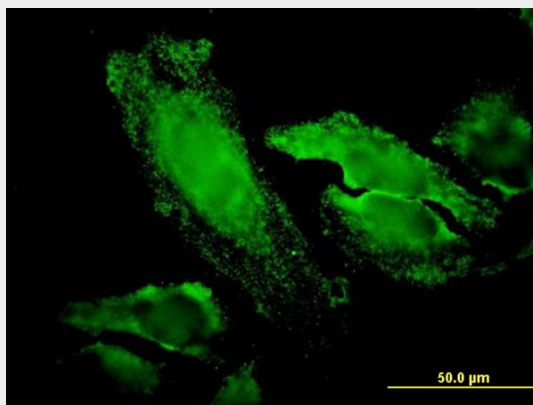
RPS7 Antibody (monoclonal) (M03) - Protocols

Provided below are standard protocols that you may find useful for product applications.

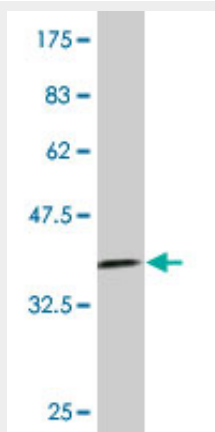
- [Western Blot](#)

- [Blocking Peptides](#)
- [Dot Blot](#)
- [Immunohistochemistry](#)
- [Immunofluorescence](#)
- [Immunoprecipitation](#)
- [Flow Cytometry](#)
- [Cell Culture](#)

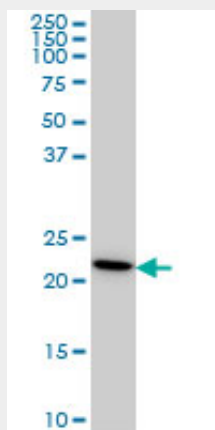
RPS7 Antibody (monoclonal) (M03) - Images



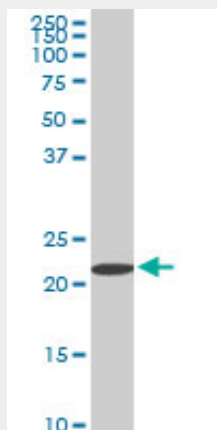
Immunofluorescence of monoclonal antibody to RPS7 on HeLa cell. [antibody concentration 20 ug/ml]



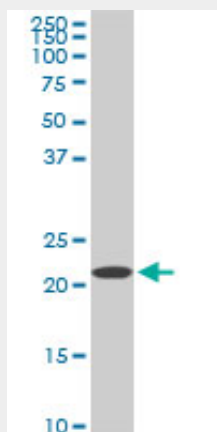
Antibody Reactive Against Recombinant Protein. Western Blot detection against Immunogen (36.74 KDa) .



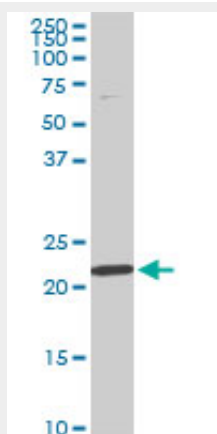
RPS7 monoclonal antibody (M03), clone 3G4 Western Blot analysis of RPS7 expression in HeLa (Cat # AT3725a)



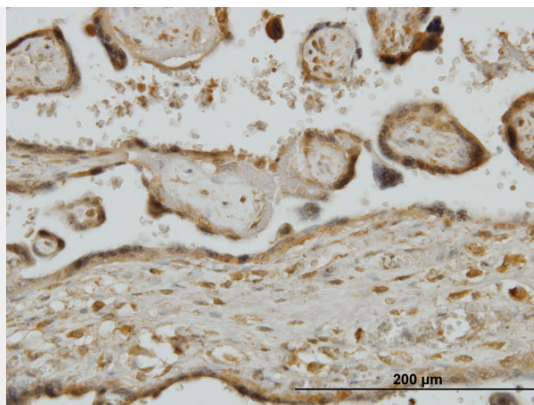
RPS7 monoclonal antibody (M03), clone 3G4. Western Blot analysis of RPS7 expression in PC-12 (Cat # AT3725a)



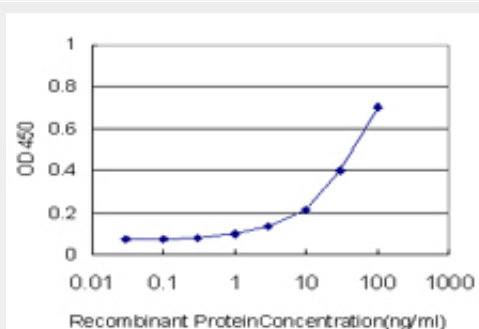
RPS7 monoclonal antibody (M03), clone 3G4. Western Blot analysis of RPS7 expression in Raw 264.7 (Cat # AT3725a)



RPS7 monoclonal antibody (M03), clone 3G4. Western Blot analysis of RPS7 expression in NIH/3T3 (Cat # AT3725a)



Immunoperoxidase of monoclonal antibody to RPS7 on formalin-fixed paraffin-embedded human placenta. [antibody concentration 3 ug/ml]



Detection limit for recombinant GST tagged RPS7 is approximately 1ng/ml as a capture antibody.

RPS7 Antibody (monoclonal) (M03) - Background

Ribosomes, the organelles that catalyze protein synthesis, consist of a small 40S subunit and a large 60S subunit. Together these subunits are composed of 4 RNA species and approximately 80 structurally distinct proteins. This gene encodes a ribosomal protein that is a component of the 40S subunit. The protein belongs to the S7E family of ribosomal proteins. It is located in the cytoplasm. As is typical for genes encoding ribosomal proteins, there are multiple processed pseudogenes of this gene dispersed through the genome.

RPS7 Antibody (monoclonal) (M03) - References

Ribosomal protein L5 and L11 mutations are associated with cleft palate and abnormal thumbs in Diamond-Blackfan anemia patients. Gazda HT, et al. Am J Hum Genet, 2008 Dec. PMID 19061985. Nucleophosmin serves as a rate-limiting nuclear export chaperone for the Mammalian ribosome. Maggi LB Jr, et al. Mol Cell Biol, 2008 Dec. PMID 18809582. The role of human ribosomal proteins in the maturation of rRNA and ribosome production. Robledo S, et al. RNA, 2008 Sep. PMID 18697920. Ribosomal protein S7 as a novel modulator of p53-MDM2 interaction: binding to MDM2, stabilization of p53 protein, and activation of p53 function. Chen D, et al. Oncogene, 2007 Aug 2. PMID 17310983. Identification of novel ARF binding proteins by two-hybrid screening. Tompkins V, et al. Cell Cycle, 2006 Mar. PMID 16582619.